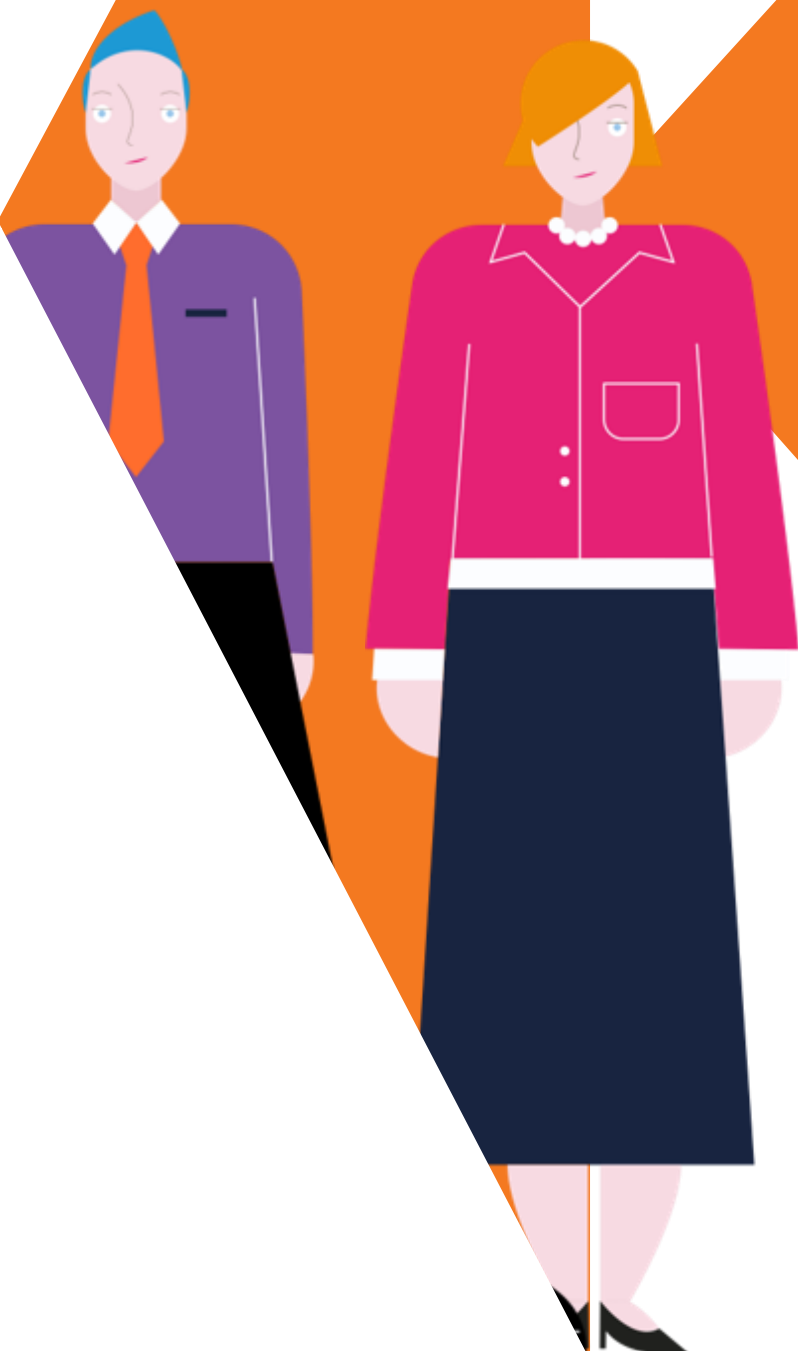


Office of Finance Suite



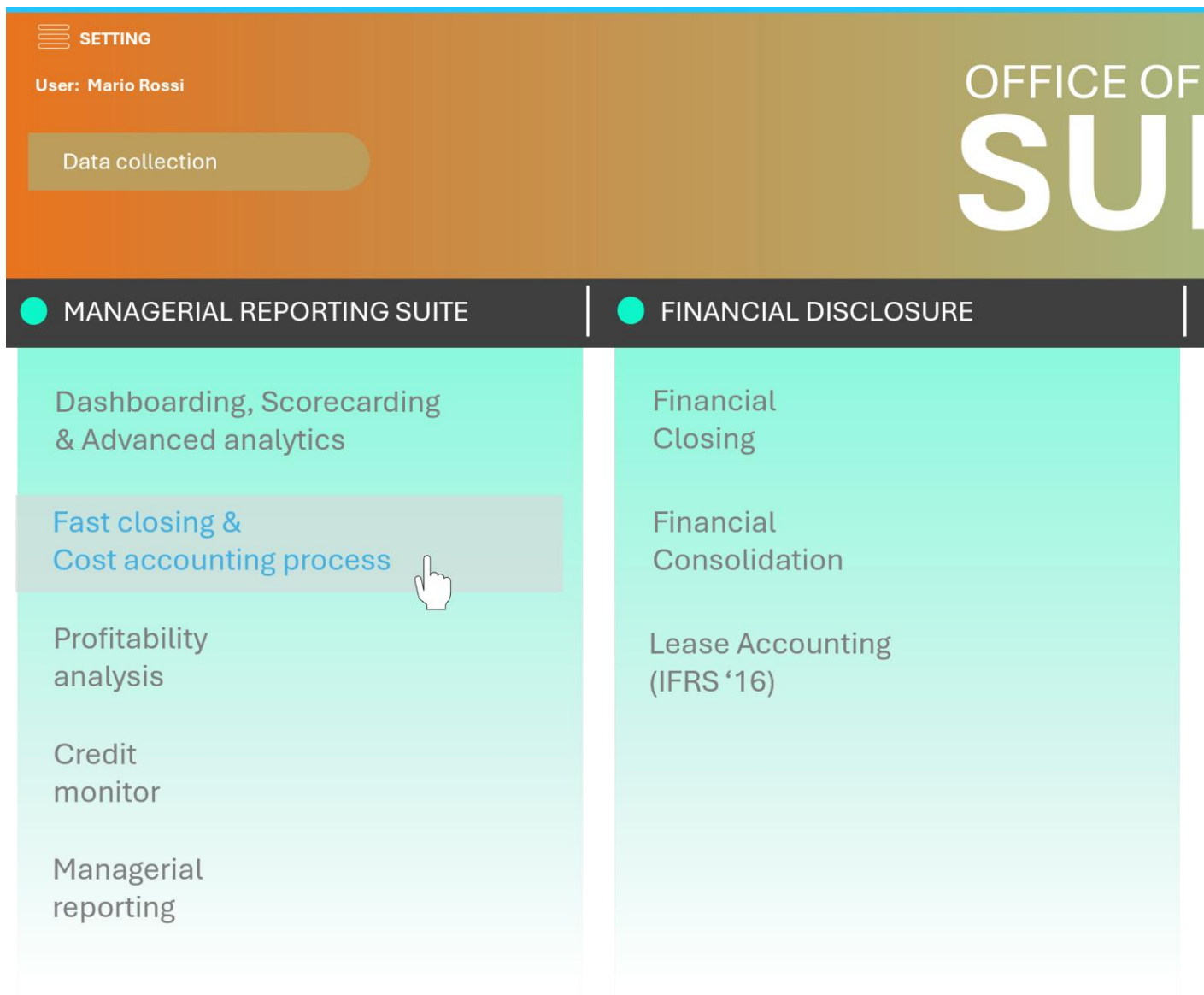
K.Group
Orange Company

orangecompany.biz

// Best practices

SUITE

K.Group supports the work of the **finance office** by streamlining various processes, making them collaborative, monitoring task progress, increasing data quality levels, and freeing up resources dedicated to information production in favor of higher value-added analysis and planning activities.



// THE BEST PRACTICES FOR THE EFFECTIVE AND EFFICIENT MANAGEMENT OF FINANCE PROCESSES

Tailor-made Models

K.Group's approach has always been that of **XP&A** (Extended Planning & Analysis), where the principles of FP&A are extended to incorporate the operational data from the different areas that generate financial results into the planning processes.

FINANCE SUITE



● PLANNING BUDGETING & FORECASTING

Rolling
Forecast

P&L
Budget

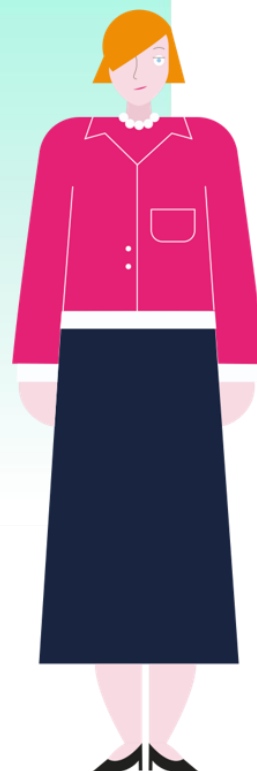
Capex Plan &
Leasing

Cashflow
planning

Integrated
Business Planning

● NON FINANCIAL DISCLOSURE

ESG
Reporting & Planning



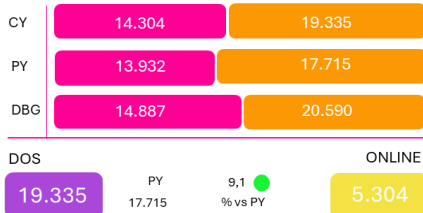
MANAGERIAL REPORTING SUITE

Dashboarding, Scorecarding & Advanced Analytics

Summary and balanced views of the **main KPIs** for performance analysis and monitoring of company objectives.

SALES - YTD

L4L TOTAL

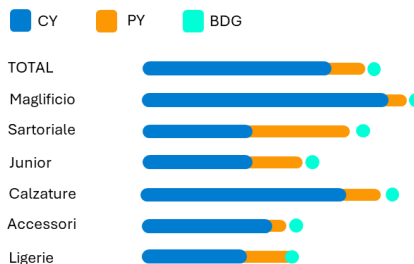


P&L

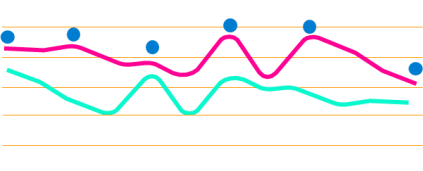
Channel	DOS	ECOMM & OUTLET	CY (K)	%	vs PY	vs PY %
Net Sales	19.420	100%	1.628	9.19%		
Sales Full Price	13.420	69.38%	849	6.76%		
Discount Sales	5923	30.62%	779	15.14%		
REVENUE	19.343	100%	1.628	9.19%		
Cost of Good Sales	10.341	53.46%	1.164	12.69%		
STANDARD CROSS MARGIN	9.002	46.54%	464	5.43%		
Depreciation	2.067	10.68%	-837	-28.83%		
GROSS MARGIN	6.936	35.84%	1.301	23.09%		

EBITDA 6.936 -4,2 % vs BDG 1,2 % vs PY CASH FLOW 4.783

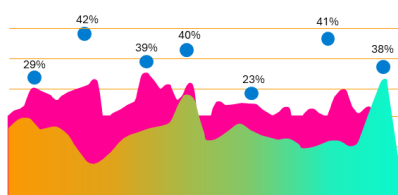
SELL THROUGH



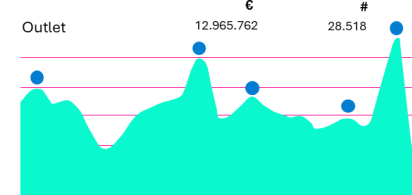
HR PRODUCTIVITY



STANDARD GROSS MARGIN



STOCK

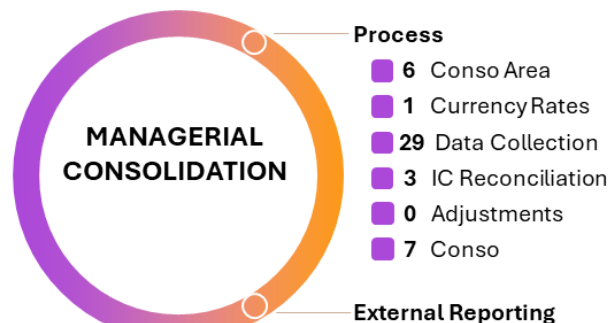
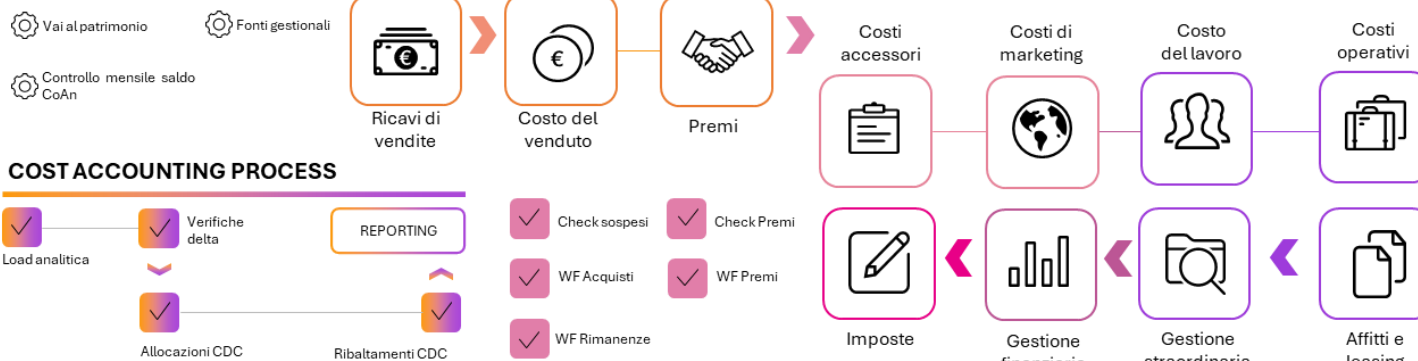


Fast Closing, Cost Accounting & Managerial Consolidation process

A **guided** and **collaborative** workflow for optimizing the periodic management closing process for both Profit & Loss and Balance Sheet: sequential allocation of costs to final cost objects.

FAST CLOSING PROCESS

Aggiornamento Dati



Profitability analysis

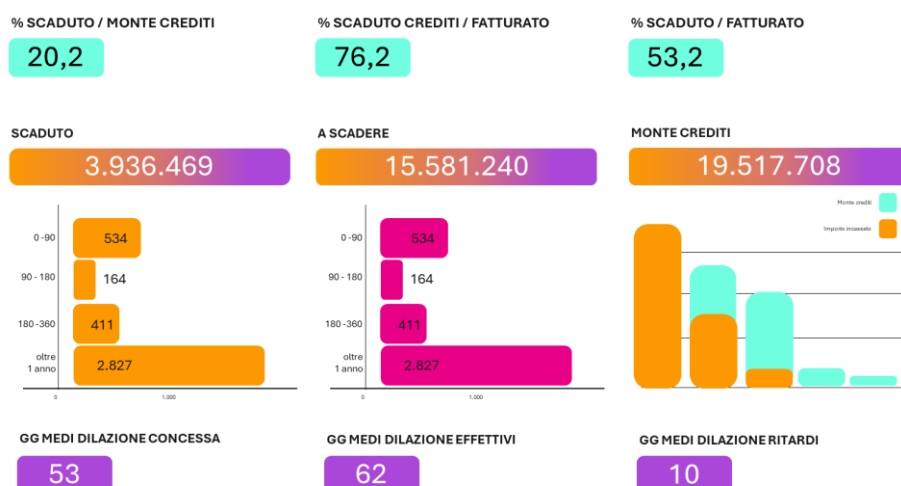


Definition of **costing** techniques.

Procedures for **granular allocation** of costs to objects and the typical business dimensions.

Analysis of **profitability** by individual dimension and cluster.

Credit Monitor



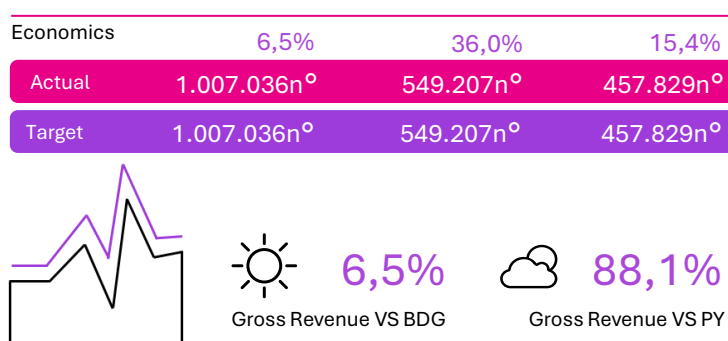
Analysis of credit **ageing** and calculation of the actual **DSO** compared to the agreed one.

Historical tracking of the credit portfolio and comparisons with benchmarks and company averages.

Managerial Reporting

A repository for managerial reporting where, alongside financial statements and data (**lag measures**), the main reports and charts on operational data from various areas (**lead measures**) are provided.

Executive Summary	Financial & Economical View
Dashboard	Company Reports
Quantitative Values	Monthly Profit & Loss
Economics & Marginality	Monthly Balance Sheet
HR (TBD)	P&L by Geography
	P&L by Client (TDB)



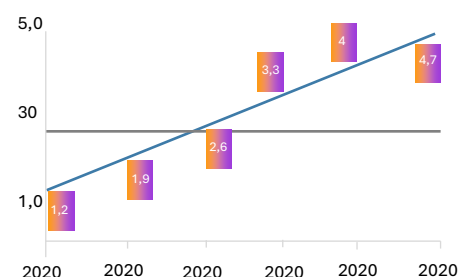
FINANCIAL DISCLOSURE

Financial Closing & Ratios

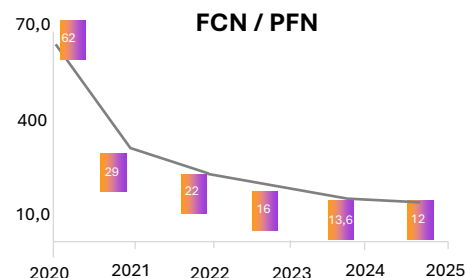
A **verification** and **closing** process of an accounting cycle (quarterly, semiannually, annually) to produce financial reports that represent the true position of the company at a given date: a statement of the main economic, asset, and financial ratios.

REPORT	PnL	%		BDG
Sales	2.059.000	-3,2	●	2.300.000
Cost of good sold	1.256.000	-4,5	●	1.001.000
1º gross margin	1.356.000	+1,2	●	1.450.000
Distribution Costs	570.000	-3,2	●	600.000
Handling variable	20.0000	-5,6	●	22.500
Handling fixed	50.000	+3,8	●	48.500
Commission costs	1.378.000	+5,9	●	1.200.000
2º gross margin	2.059.000	+1,2	●	2.000.000
Personal	2.354.000	-3,2	●	2.190.000
Fixed logistic costs	1.450.000	-3,2	●	1.560.000
Services	780.000	-3,2	●	810.000
Marketing	400.000	-3,2	●	458.000
Others	60.000	-3,2	●	80.0000
Total fixed costs	12.000.000	+2,8	●	12.800.000
EBITDA before non recurrent items	2.450.000	+3,5	●	2.000.000
D&A	1.780.000	+1,2	●	1.630.000
Bad debt provision	780.000	-3,2	●	800.000
Final Charges	50.000	+5,2	●	45.000
Others	5.000	-3,2	●	4.850
EBT	2.879.000	+3,8	●	2.059.000
Income Taxes	1.478.000	-2,9	●	1.100.000
Net profit	2.059.000	+1,5	●	1.899.000

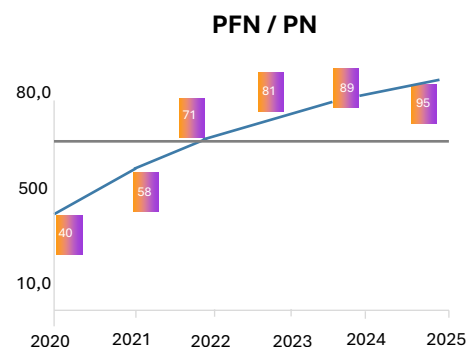
PFN / EBITDA



FCN / PFN



PFN / PN



Financial Consolidation



A process for **aggregating** and **consolidating** the balance sheet data of the holding company and its subsidiaries to create financial reports.

The process requires compliance with the rules and guidelines provided by law (including IFRS and local GAAP) and incorporates various complex procedures such as currency conversion, intercompany eliminations, adjustments of accounting entries, and considerations of partial ownership.

Lease Accounting (IFRS '16)

Contract Evaluated	Contract Calculated	Contract Journalized
→	→	→

Contract List & Status				
Contract	Contract Version	Lease Payment	Periodicity	
- Scenario: ACT				
01 Contract 1	1	3.903,36	Monthly	
02 Contract 2	1	529,90	-45.005	
Total				

Process & Controls				
Application Controls				
- To Do List: General Setting				
01 General Setting				<input type="checkbox"/>
02 Contract 2				<input type="checkbox"/>
Total				

Alerting Data Manager				
Deadlines				
- To Do List: General Setting				
01 General Setting			-45.005	
02 Contract 2			-45.005	
Total				

It enables companies to easily comply with **IFRS 16** and **ASC 842** regulations for rental/leasing contracts, giving them full control over the entire process of data management, calculation, simulation of various scenarios, and reporting.

It simplifies the preparation of accurate accounts for real estate and leased/rented assets, eliminates non-compliant spreadsheets, and automates time-consuming manual processes.

PLANNING, BUDGETING & FORECASTING

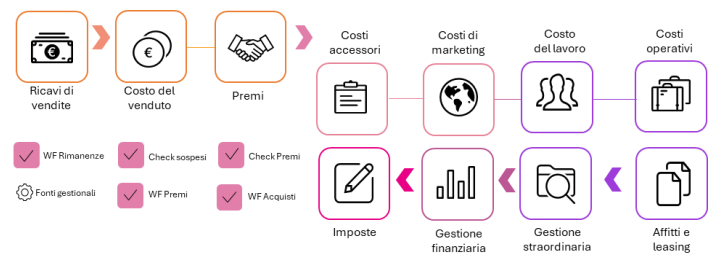
Rolling Forecast

An iterative model for **forecasting** economic results based on historical data or by configuring specific algorithms for account categories.



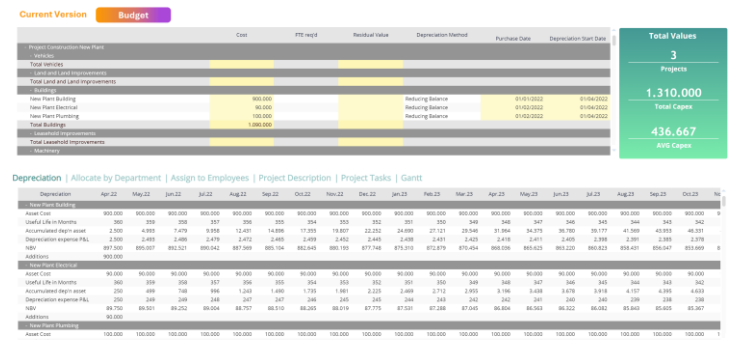
P&L Budget

A **structured** and **collaborative** budgeting process (top-down/bottom-up) that eliminates errors and delays related to sharing spreadsheets, for planning the expected economic objectives.



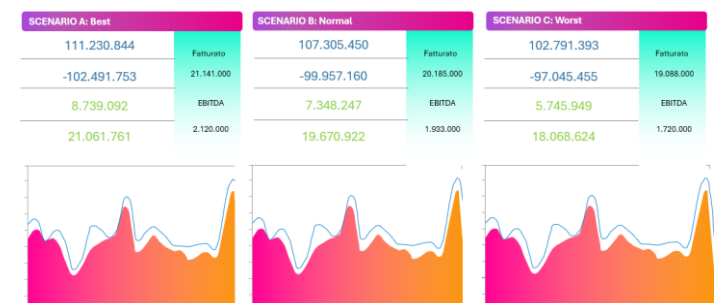
Capex Plan & Leasing

Planning for future **investments** with the ability to manage different scenarios and obtain the development of future amortizations, expected cash flows, and the dynamics of fixed assets in the Balance Sheet.



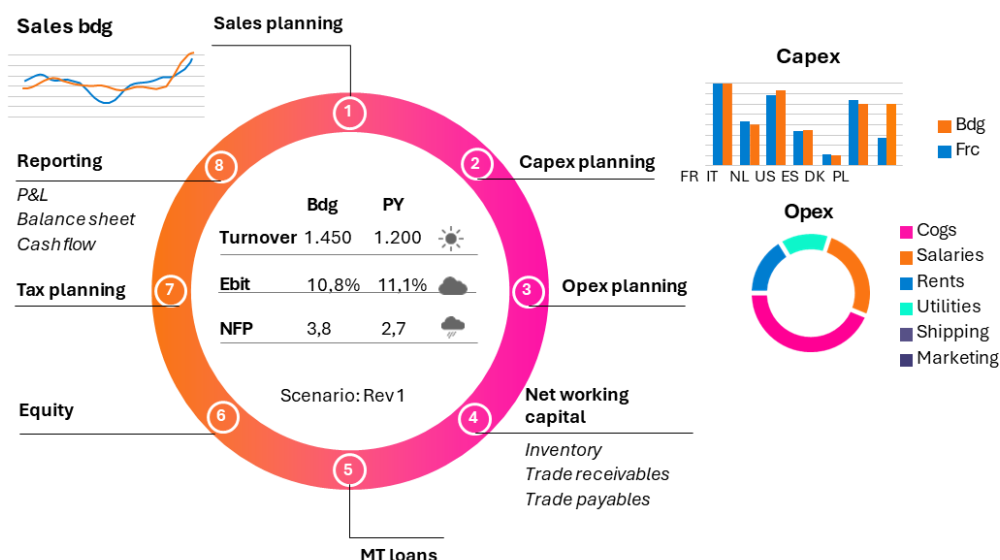
Cashflow planning

A simulation of short-term **cash flows** by integrating forecast accounting data and budget data, generating hypotheses and scenarios through what-if simulations.



Integrated Business Planning

An **integrated process** of economic, asset, and financial planning over a flexible, multi-company, and multi-currency time horizon, which allows the company to determine whether it has the financial resources available to implement its multi-year economic plan, in line with the regulations of adequate organizational structures.



NON FINANCIAL DISCLOSURE

ESG Reporting & Planning

A model for aggregating heterogeneous data for the construction, planning, and monitoring of **ESG** KPIs, ensuring data quality through consistency checks.

Create reports in line with the most recent standards. Track sustainability performance at the corporate, business unit, geographic, and structural levels.





K.Group
Orange Company



stories



tutorial



community